

PART OF N. 1/2 OF SEC. 18, T.6N., R.2E., S.L.B. & M.

# HUNTSVILLE SURVEY

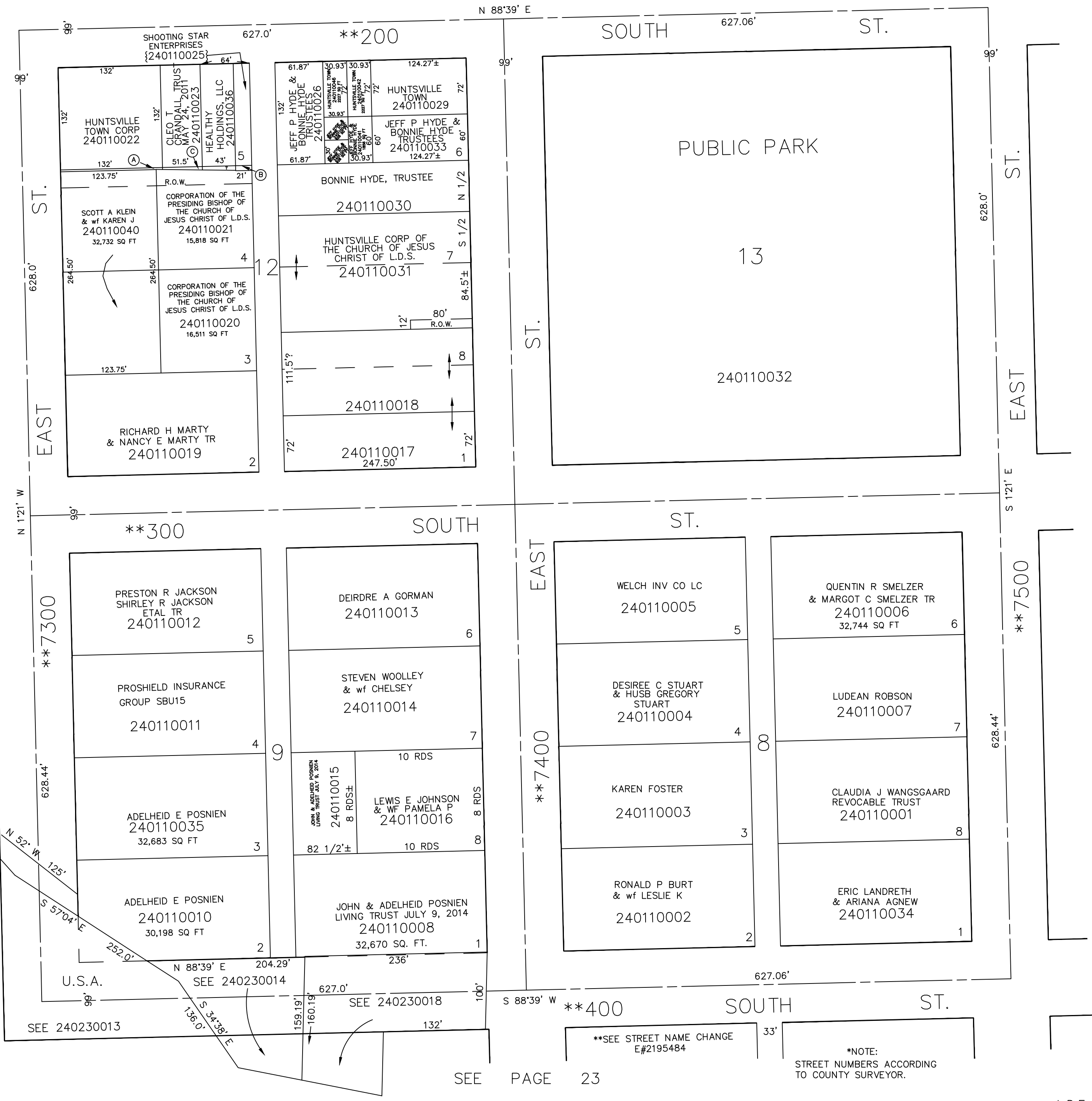
BLOCKS 8, 9, 12 & 13, PLAT A

TAXING UNIT: 35

SCALE 1" = 100'

SEE PAGE 14

- (A) HUNTSVILLE TOWN CORP  
240110037  
248 SQ FT
- (B) SHOOTING STAR ENTERPRISES  
240110038  
135 SQ FT
- (C) CLEO T CRANDALL TRUST  
MAY 24, 2011  
240110039  
179 SQ FT



SEE PAGE 12

SEE PAGE 10

SEE PAGE 23

\*\*SEE STREET NAME CHANGE E#2195484

\*NOTE: STREET NUMBERS ACCORDING TO COUNTY SURVEYOR.